



appec

Smart Steel Structures

COLD-FORMED STEEL CONSTRUCTION
RESIDENTIAL, SOCIAL AND MODULAR BUILDINGS

Company Overview

- Established: 2007
- Employees: 60
- Office: Istanbul, Turkey
- Factory: Yalova, Turkey

Product Range

- Industrial and Commercial Buildings
- Residential Buildings
- Modular Buildings

Scope of Services

- Engineering Consulting
- Structural Steel Manufacturing
- Project Execution
- General Contractor



Advantages of Cold-Formed Steel Structures Compared with Other Construction Techniques

- **Lighter and stronger** due to high strength-to-weight ratio
- **Fast and precise** production with high level of quality control
- Simple, quick and **accurate assembly**
- **Reduced foundation requirements and freight costs** due to lightweight superstructure
- **Reduced labor costs** as pre-engineered systems do not require highly-skilled on-site labor
- **Reduced site costs** since heavy machinery is not required and assembly duration is shorter
- **Earthquake resistance** due to lightness and ductility
- **Low-maintenance**, galvanized members do not require sand-blasting or painting
- Excellent performance characteristics with regards to **acoustic** and **thermal insulation**
- **Sustainable construction** with reduced carbon footprint
- 100% recyclable and **no material wastage**, reducing the overall environmental impact
- **Dry** production and site without the use of limited water resources
- **Quicker reach to the operational life** of the building due to the speed of construction
- **Demountable** with negligible loss, extendable or relocatable
- Offers **greater ROI** on overall investment due to the aforementioned benefits

APEEC

Smart Steel Structures



Sakura Park Residential Project - Yalova, Turkey



Coca Cola Bottling Factory - Isparta, Turkey

Our Technology

High-Grade Steel

- S350, S390, S450, S550
- Hot-dipped galvanized zinc coating (275/m²)

Superior Engineering

- R&D department offers advanced solutions to various needs
- Local climate, ground and seismic conditions are taken into account
- Design conforms to National Regulations and International Standards
- State of the art engineering, design and production software

Cutting-Edge Manufacturing Techniques

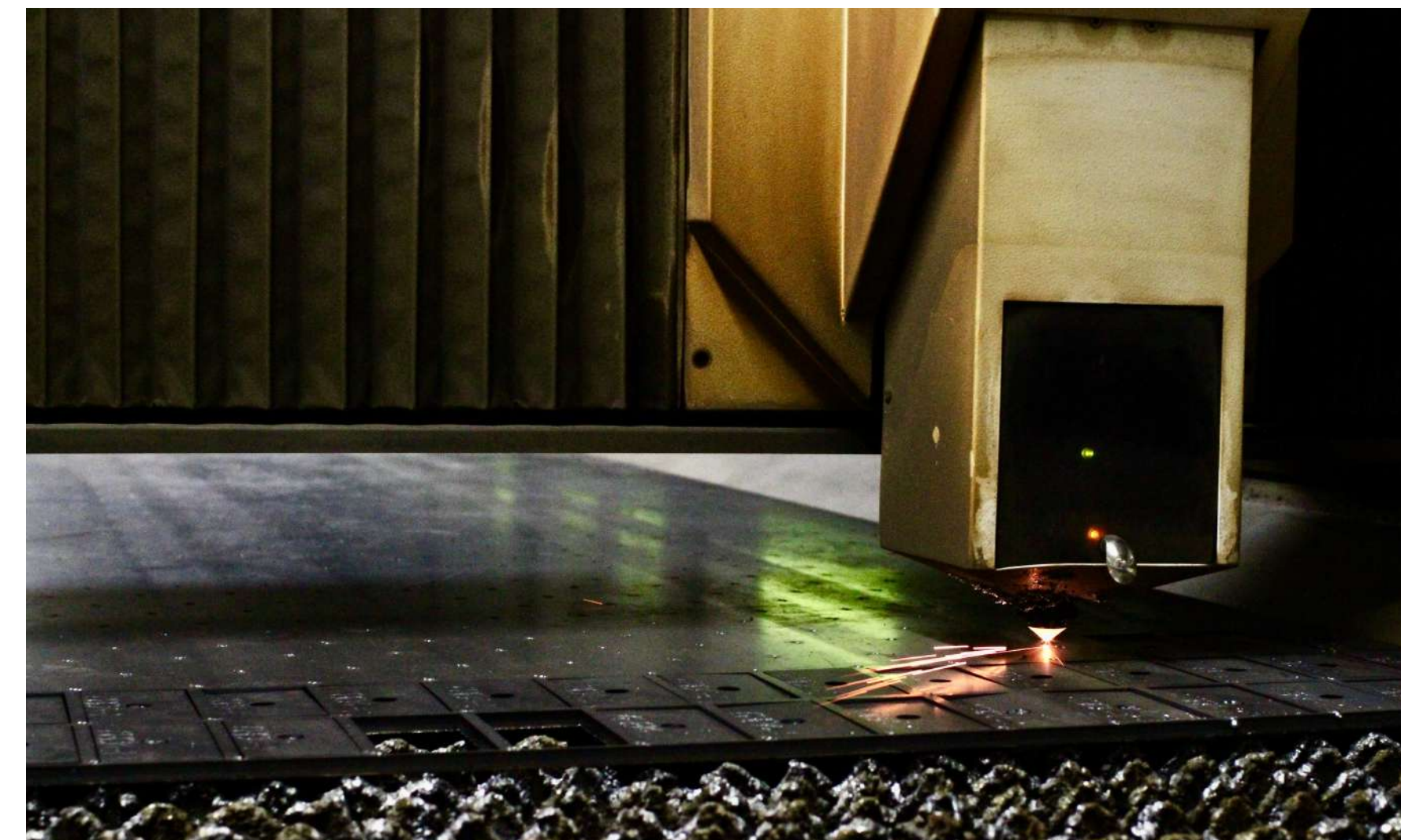
- CE certified production process
- Super fast production with automated lines
- CNC manufacturing lines eliminate human error
- Laser imprinted codes ensure smart packaging and assembly

Low Freight Costs and Quick Assembly

- High-strength bolted system
- Easy and fast assembly process with simple labor and light machinery
- Demounted and lightweight system enables even long-distance freight to be cost-efficient

Various Cladding Options

- Sandwich panels with different insulation and color options
- Single skin cladding with different forms and colors
- For residential projects, it is possible to use materials and finishings for all different quality segments



Residential and Social Buildings

Types of Buildings

- Villa
- Twin Villa
- Duplex Condo
- Condominium
- School Buildings
- Hospital and Clinics
- Office Buildings
- Camp Buildings
- Hotels and Tourism Buildings



Twin Villa, Yalova Turkey



Firatpen Factory Office Buildings, Erzincan Turkey



APEC - Besiktas Elementary School, Elazig Turkey



Condominium, Angola

Cold- Formed Steel as a Superior Construction Technique

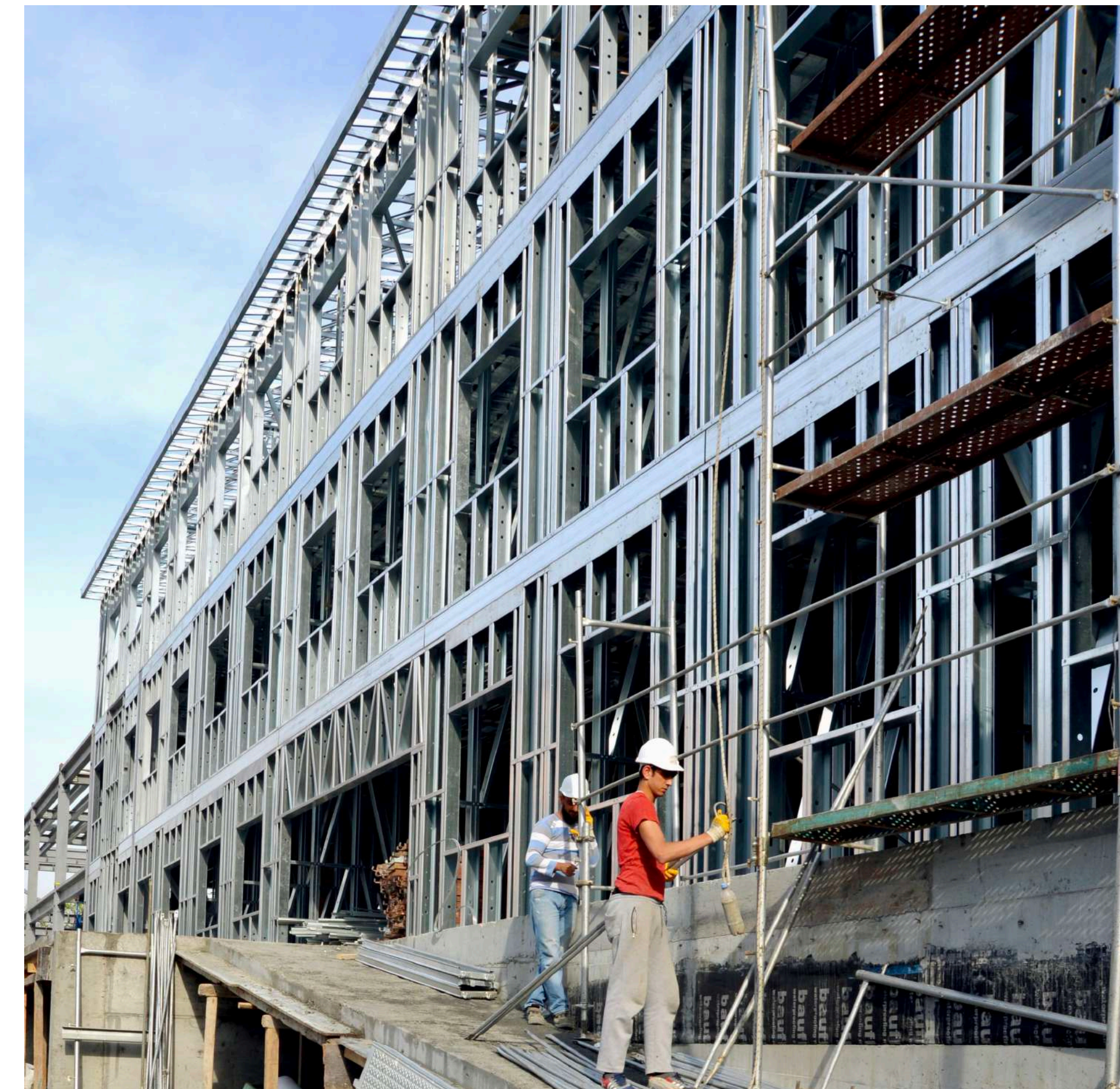
- Possibility to construct between **3 - 11 floors** depending on the **static loads** of the construction area (in **seismic regions** such as Turkey and Italy, solutions **up to 3 floors**)
- Compared to concrete, **%5 more net usable m²** on average and **more ideal interior design** since there are no columns or beams required in the architectural design
- Possibility of **composite solutions** with hot-rolled steel for **non-standard spans and clear heights**
- Steel superstructure **weight** starting from **20 kg/m²**
- Suitable for the application of **all different interior and exterior cladding materials** used in all **different segments ranging from social housing to luxury**
- **No restriction for the length and width** of the building
- **5-6 times faster** construction technique compared to concrete construction
- Possibility of **solutions for even undesirable soil conditions**, as a result of **light superstructure weight and foundations**
- **High production capacity and high construction speed**



Cerrahpasa Hospital, Istanbul



Millenium Suites Hotel, Guinea



Cerrahpasa Hospital, Istanbul

SAKURA PARK YALOVA, LUXURY RESIDENTIAL PROJECT

Location: Yalova, Turkey

Residential Construction Area: 16.000 m²

Units: 76



All the 76 units in Sakura Park Yalova project have been constructed with cold-formed steel, applying A+ construction materials.

In addition to being the only earthquake proof project in the seismic region, it is the most sought-out, expensive and high-quality project in the area.

Due to demand, the construction of the second phase has started in Summer 2022.



Sakura Park Yalova, Recent Drone Shoot



Sakura Park Yalova, Render for Second Phase

SAKURA PARK YALOVA, LUXURY RESIDENTIAL PROJECT

Location: Yalova, Turkey

Residential Construction Area: 16.000 m²

Units: 76

APEEC

Smart Steel Structures



Sakura Park Yalova, Recreational Areas, Garden Duplex + Flat Render



Sakura Park Yalova, Duplex Construction



Sakura Park Yalova, Recreational Areas, Garden Duplex + Flat Photoshoot



Sakura Park Yalova, Duplex Photoshoot

SAKURA PARK YALOVA, LUXURY RESIDENTIAL PROJECT

Location: Yalova, Turkey

Residential Construction Area: 16.000 m²

Units: 76

APEEC

Smart Steel Structures

The **280 m²** "Konak" model's **building construction has been finished in 60 days**, and including finishing details and landscaping it has been finished in 90 days.



Sakura Park, Konak Render



Sakura Park Yalova Şantiye, Konak 5. Gün



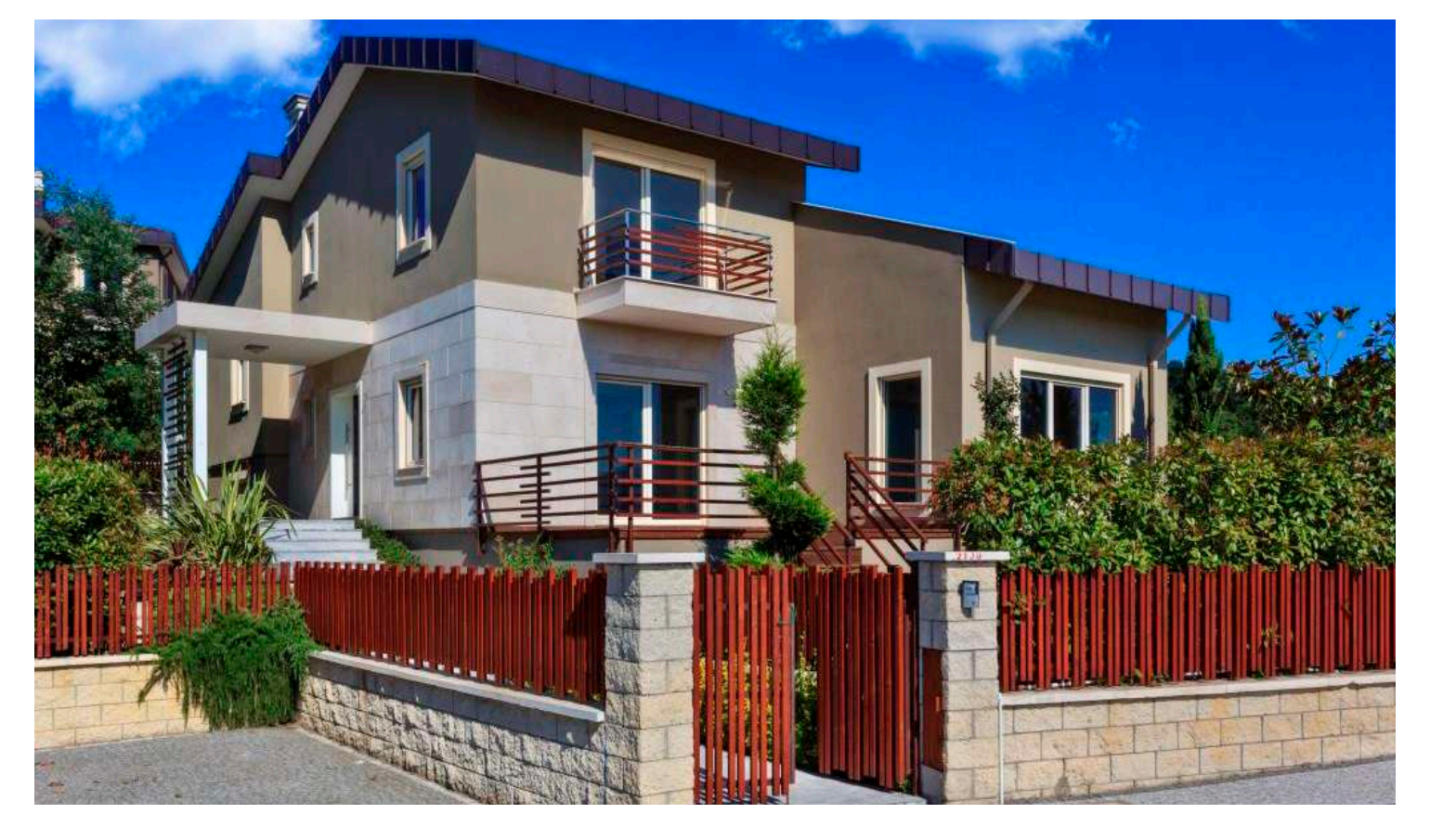
Sakura Park Yalova Şantiye, Konak 8. Gün



Sakura Park Yalova Şantiye, Konak 21. Gün



Sakura Park Yalova Şantiye, Konak 45. Gün



Sakura Park Yalova Şantiye, Konak 90. gün

SAKURA PARK YALOVA, LUXURY RESIDENTIAL PROJECT

Location: Yalova, Turkey

Residential Construction Area: 16.000 m²

Units: 76

APECC

Smart Steel Structures



Villa Render



Villa Render



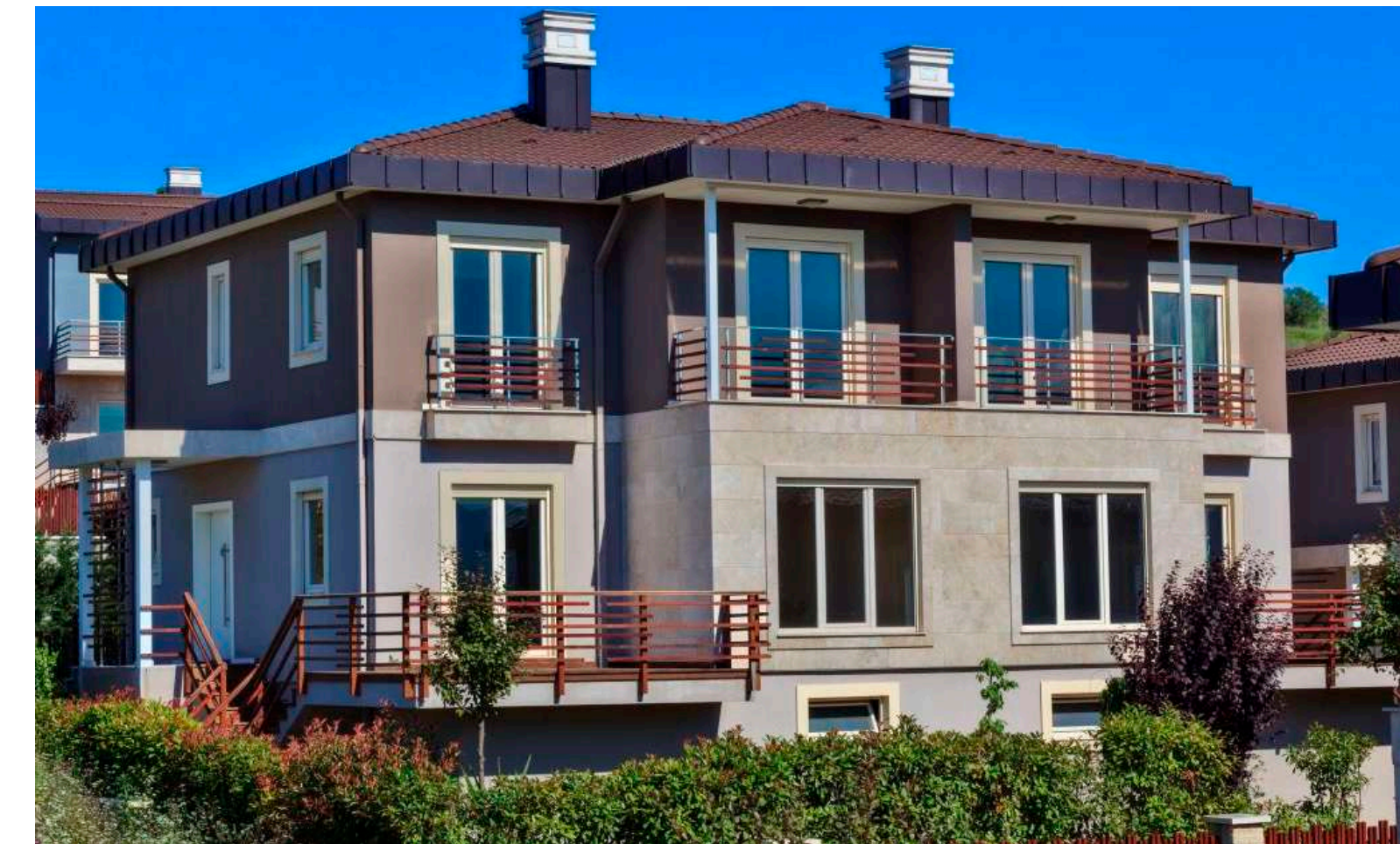
Twin Villa Render



Villa Photoshoot



Villa Photoshoot



Twin Villa Photoshoot

SAKURA PARK YALOVA, LUXURY RESIDENTIAL PROJECT

Location: Yalova, Turkey

Residential Construction Area: 16.000 m²

Units: 76

APEEC

Smart Steel Structures



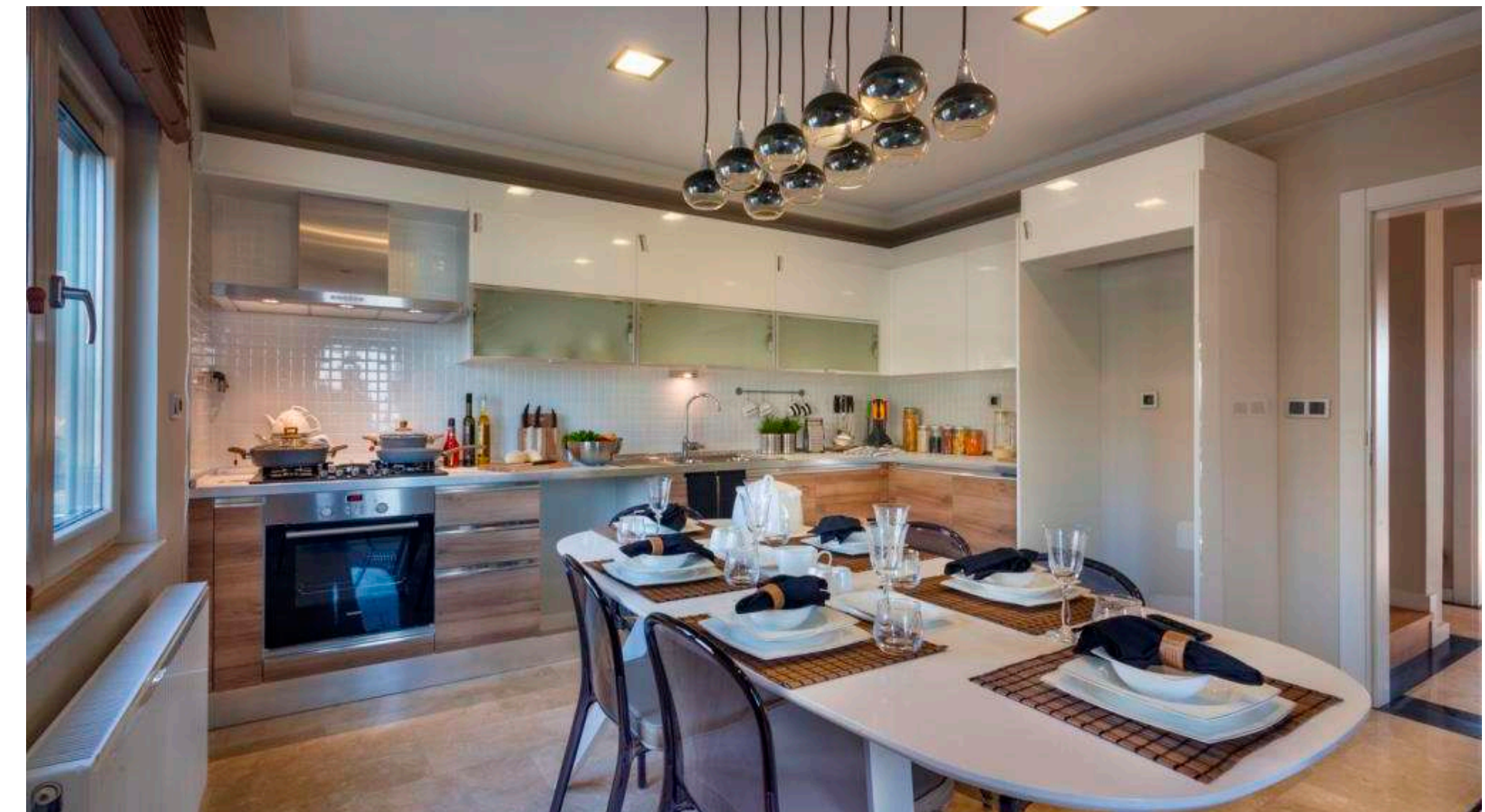
Sakura Park Yalova, Photoshoot of Recreational Areas



Sakura Park Yalova, Construction Process



Sakura Park Yalova, Photoshoot of a Decorated Unit



Sakura Park Yalova, Photoshoot of a Decorated Unit

SAKURA PARK YALOVA 2nd PHASE, LUXURY RESIDENTIAL PROJECT

Location: Yalova, Turkey

Residential Construction Area: 18.000 m²

Units: 80

APEEC

Smart Steel Structures

Construction has started in July 2022



SAKURA PARK YALOVA 2nd PHASE, LUXURY RESIDENTIAL PROJECT

Location: Yalova, Turkey

Residential Construction Area: 18.000 m²

Units: 80

APEC

Smart Steel Structures

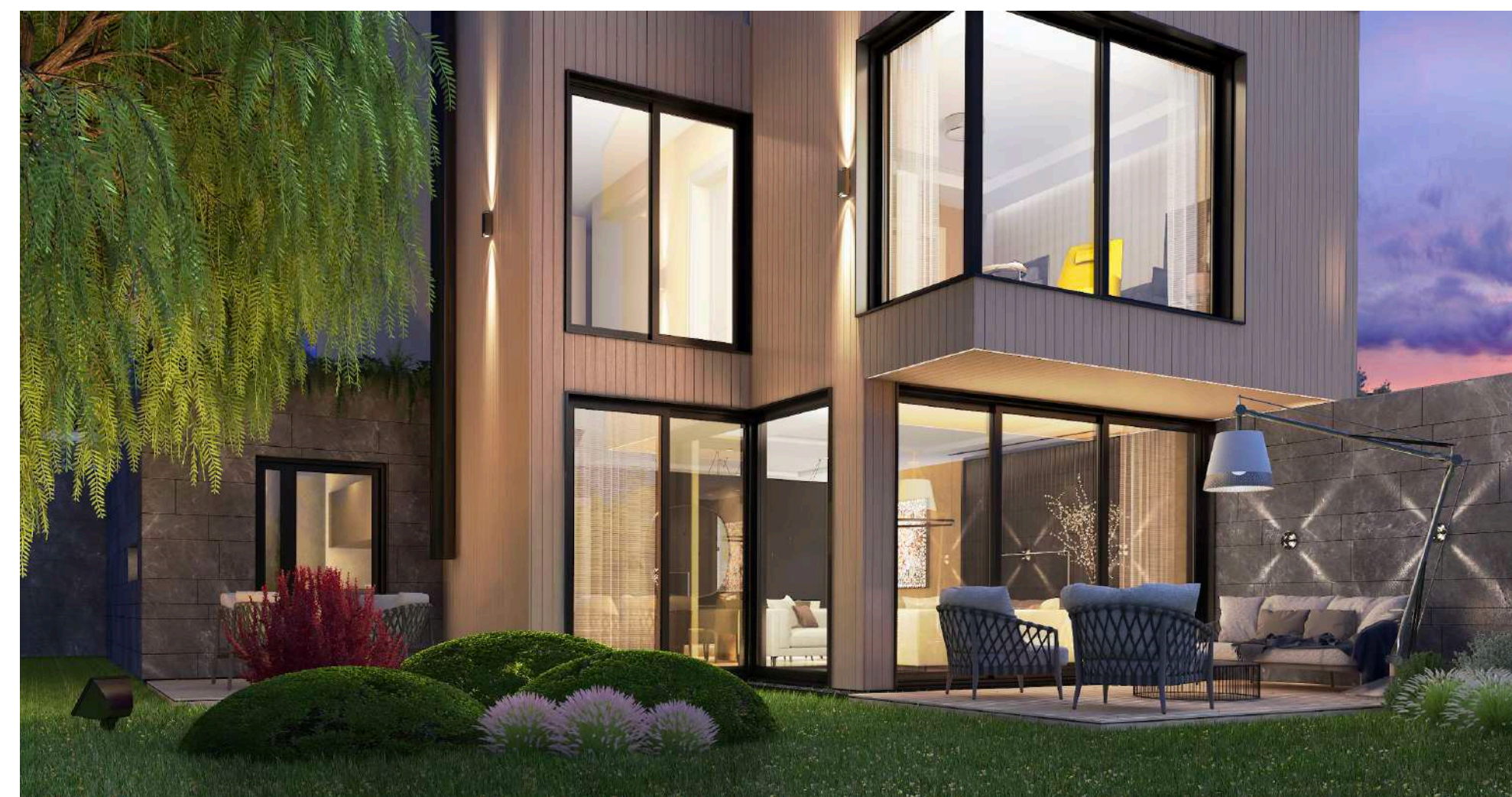


ZEKERİYAKOY RESIDENTIAL PROJECT

APEC

Smart Steel Structures

Construction starts in March 2023



LUXURY RESIDENTIAL PROJECT

APEC

Smart Steel Structures



VILLA PROJECTS

APEC

Smart Steel Structures



VILLA PROJECTS

APEC

Smart Steel Structures



VILLA PROJECTS

APEC

Smart Steel Structures



NILUFER PARK, KOCAELI RESIDENTIAL PROJECT

Location: Kocaeli, Turkey

Residential Construction Area: 2.080 m²

Units: 13

APECC

Smart Steel Structures



NILUFER PARK, KOCAELI RESIDENTIAL PROJECT

Location: Kocaeli, Turkey

Residential Construction Area: 2.080 m²

Units: 13

APEEC

Smart Steel Structures



ERGUVAN PARK, KOCAELI RESIDENTIAL PROJECT

Location: Kocaeli, Turkey

Residential Construction Area: 4.100 m²

Ünite Sayısı: 21

APEC

Smart Steel Structures



KARAMURSEL KONAKLARI, KOCAELI RESIDENTIAL PROJECT

Location: Kocaeli, Turkey

Residential Construction Area: 5.600 m²

Units: 27

APEC

Smart Steel Structures



CONDOMINIUM, ANGOLA

Location: Angola

Residential Construction Area: 4.000 m²

APEEC

Smart Steel Structures



CERRAHPASA HOSPITAL BUILDINGS, ISTANBUL

Location: Istanbul, Turkey

Construction Area: 33.600 m²

APEC

Smart Steel Structures



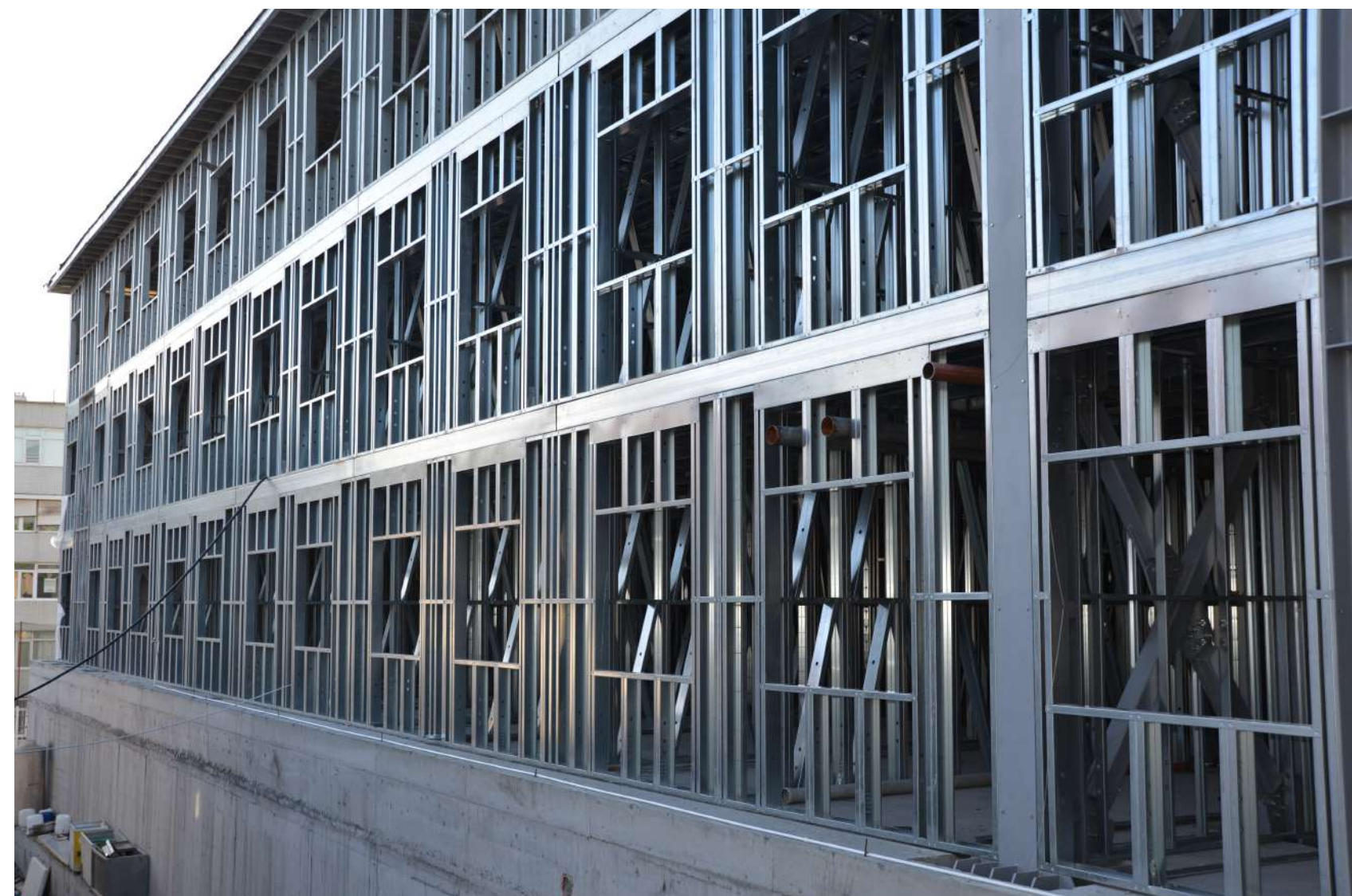
CERRAHPASA HOSPITAL BUILDINGS, ISTANBUL

Location: Istanbul, Turkey

Construction Area: 33.600 m²

APEEC

Smart Steel Structures



CERRAHPASA HOSPITAL BUILDINGS, ISTANBUL

Location: Istanbul, Turkey

Construction Area: 33.600 m²

APEC

Smart Steel Structures



MILLENNIUM SUITES HOTEL BUILDING, GUINEA

Location: Guinea

Construction Area: 7.000 m²

APEEC

Smart Steel Structures



MILLENNIUM SUITES HOTEL BUILDING, GUINEA

Location: Guinea

Construction Area: 7.000 m²

APEEC

Smart Steel Structures



TURKISH GERMAN UNIVERSITY, ISTANBUL

Location: Istanbul, Turkey

Construction Area: 3.580 m²

Completion Time: 2 months

APEC

Smart Steel Structures



KOVANCILAR BEŞİKTAS ELEMENTARY SCHOOL, ELAZIG

Location: Elazig, Turkey

Construction Area 1.250 m²

APEEC

Smart Steel Structures



ELEMENTARY SCHOOL, ERZURUM

Location: Erzurum, Turkey

Construction Area: 3.100 m²

APEEC

Smart Steel Structures



OFFICE BUILDINGS, LIBYA

Location: Libya

Construction Area: 5.500 m²

Completion Time: 3 months

APEC

Smart Steel Structures



OFFICE BUILDING, DJIOUBUTI

Location: Djibouti

Construction Area: 1.800 m²

APEEC

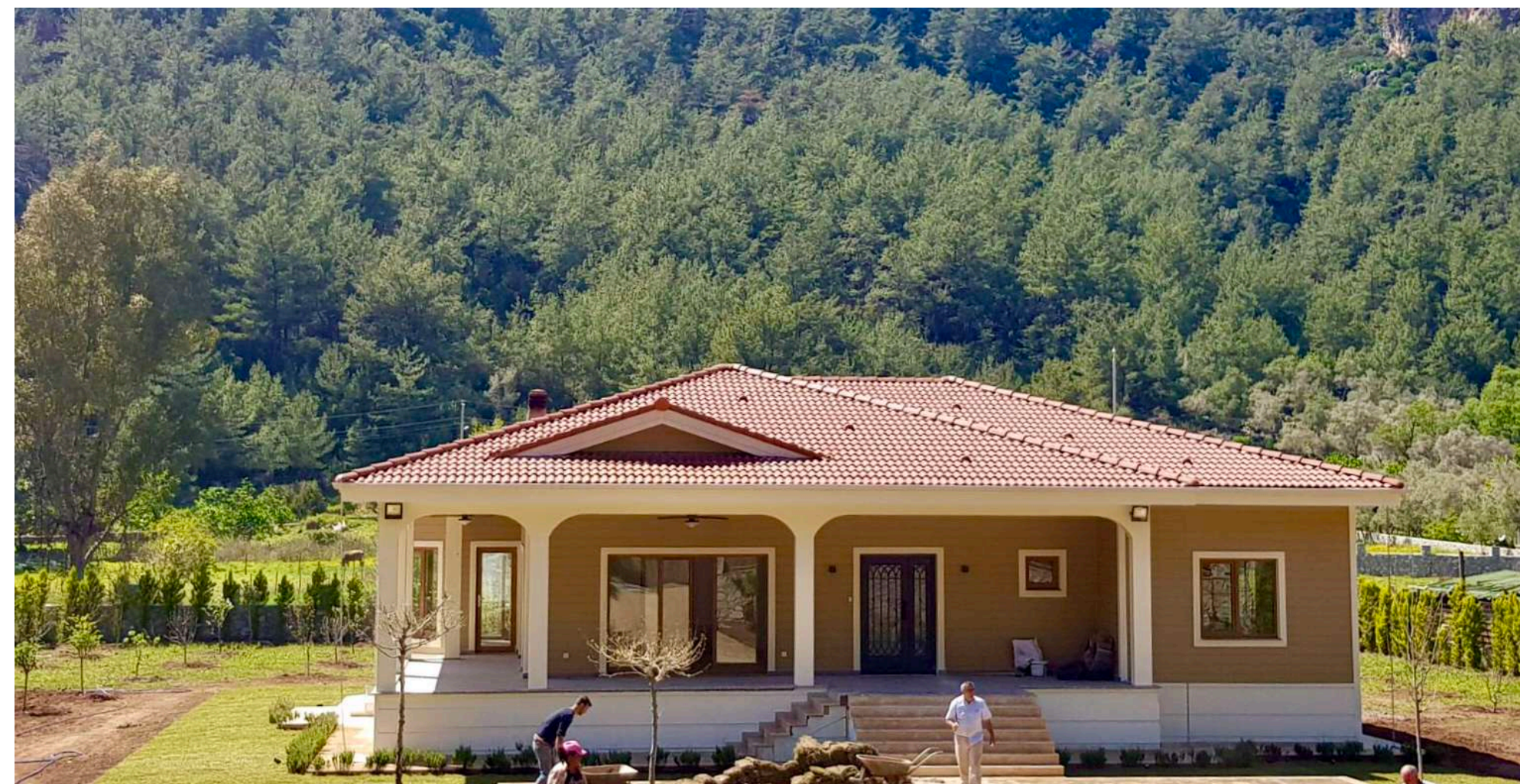
Smart Steel Structures



VILLA SAMPLES

APEC

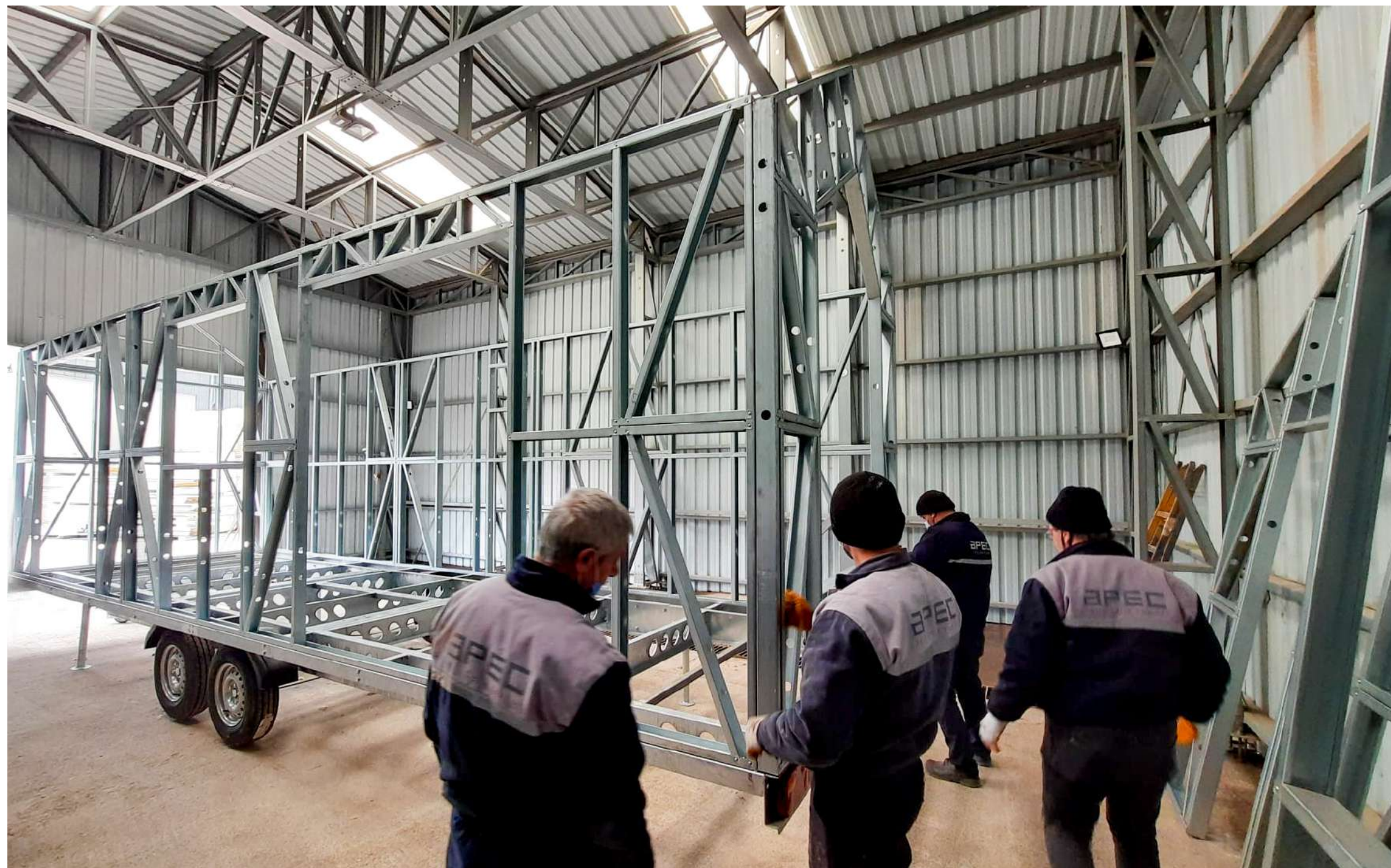
Smart Steel Structures



TINY HOUSE PRODUCTION

APEC

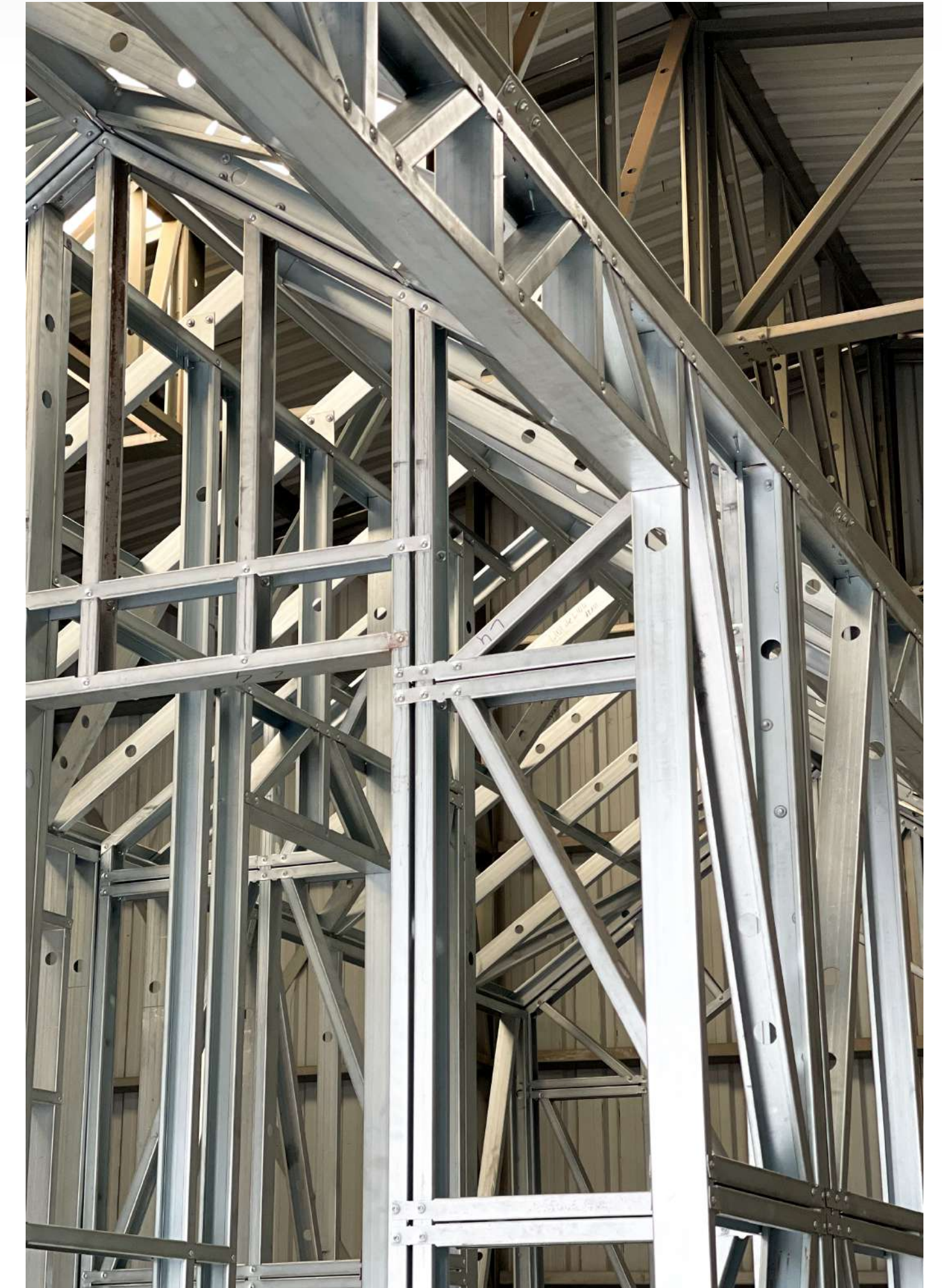
Smart Steel Structures



TINY HOUSE PRODUCTION

APEC

Smart Steel Structures



TINY HOUSE PRODUCTION

APEC

Smart Steel Structures



APEC Tiny House - Mobile Model 1



APEC Tiny House - Mobile Model 2



APEC Tiny House - Fixed Model 1



TINY HOUSE PRODUCTION

APEC

Smart Steel Structures



APEC Tiny House - Fixed Model 2



MODULAR CONTAINER PRODUCTION

APEC Smart Steel Structures **engineers** and **manufactures** high quality, **galvanized steel modular containers** in its **high-capacity production** facilities in Turkey.

APEC modular containers are swiftly **exported to all European countries and the rest of the world** in large quantities through **flat-pack** transportation.



APEC Production Facilities

APEC

Smart Steel Structures

APEC's engineering is in accordance with **DIN norms** and **Eurocode** static calculations.

All materials such as steel, cladding, flooring, cement board, doors, windows etc, that make up APEC Modular Containers are **CE marked**.



Container Monoblock Transportation



Container Labor Camp, Finland

MODULAR CONTAINER PRODUCTION

APEC

Smart Steel Structures



Refugee Camp, Germany



APEC Factory, Flat-Pack Transportation Preparations



Factory, Flat-Pack Transportation

MODULAR CONTAINER PRODUCTION

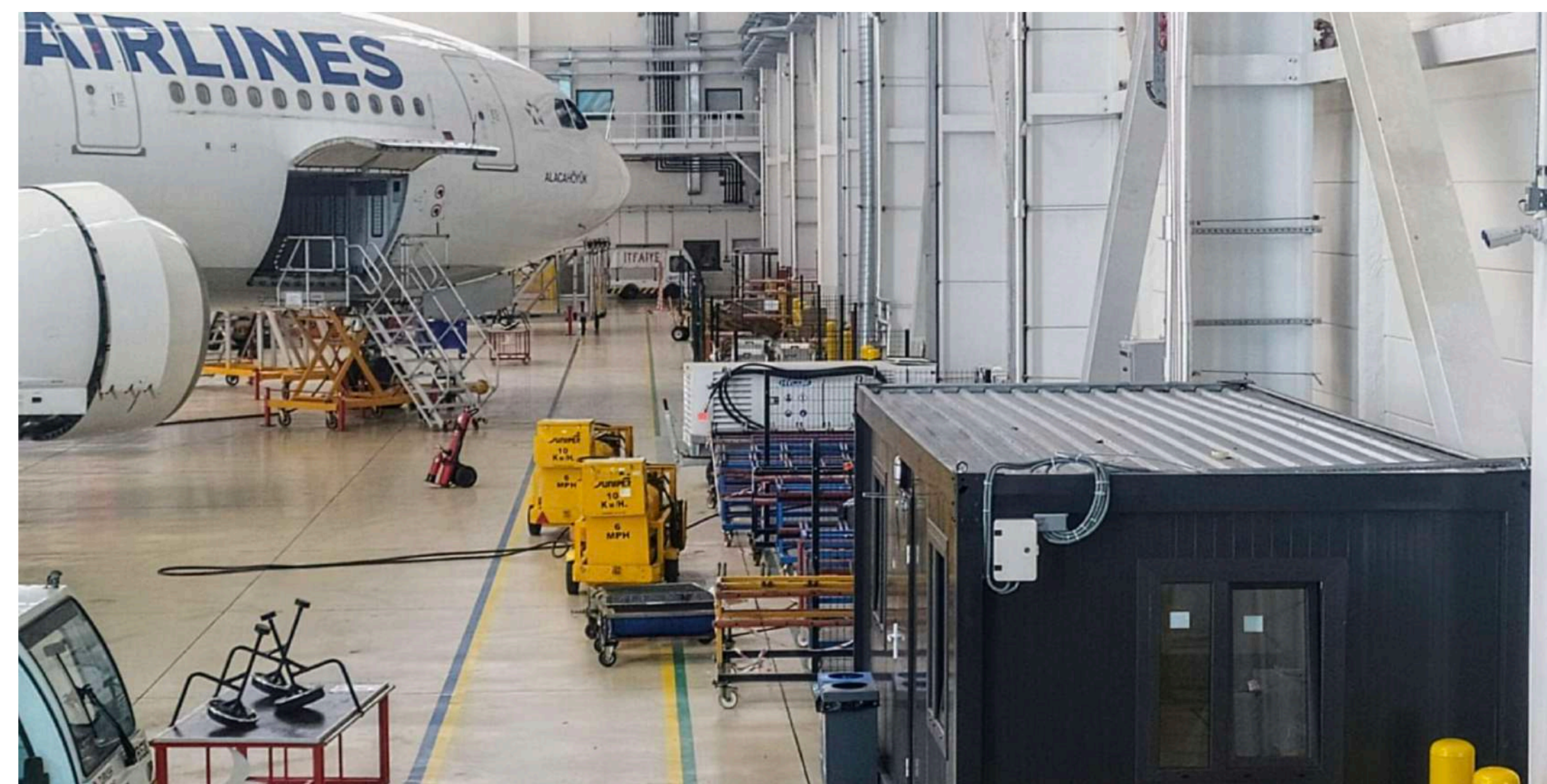
APEC's modular containers can be designed for living, working, sanitary, or dormitory purposes.



Turkish Airlines, Istanbul Airport Hangar Offices



Office Building, Netherlands



Turkish Airlines, Istanbul Airport Hangar Offices

APEC

Smart Steel Structures

APEC Steel Manufacturing Facility

İzmit Yolu Caddesi No:26/28
Taşköprü, Yalova TURKEY

Phone: [+90 212 280 22 00](tel:+902122802200)

Phone: [+90 226 333 0 303](tel:+902263330303)

info@apcc.com.tr

www.apcc.com.tr



CFSEI
COLD-FORMED STEEL
ENGINEERS INSTITUTE



Steel Framing Alliance™
Steel. The Better Builder.